

Show & Tell

May, 2023

Pam Ehrhardt

Indigo Circles—I indigo dyed most of the pieces for this quilt. Quilted it with 1/4" parallel lines. 26" x 26"



Pam Ehrhardt



Pam Ehrhardt

Pam Ehrhardt

Full Spectrum Circles—I dyed most of the solids used in the quilt. Blocks were randomly placed. Quilted it with 1/4" parallel lines. 30" x 30"



Pam Ehrhardt



Pam Ehrhardt

Pam Ehrhardt

Improv Circles—I was teaching a class in "Piecing Curves" and wanted to demonstrate that you do layer two pieces of fabric together, cut any curve through them both and then sew them together along that curve. 40" x 52"

Pam Ehrhardt





Pam Ehrhardt

Pam Ehrhardt

Kaye's Circles—Too much Kaffe Fassett fabric in my stash! I wanted to practice circle quilting so filled all the white background with circles of all sizes. 43" x 46"



Pam Ehrhardt



Pam Ehrhardt

Joleen Green

I used “In the Beginning” border print fabric. This is my own design and I quilted it on my APQA long arm.

36" x 68"



Joleen Green



Joleen Green

Joleen Green

This pink table runner uses Hawaiian prints. It is my own design. 20" x 54"



Joleen Green



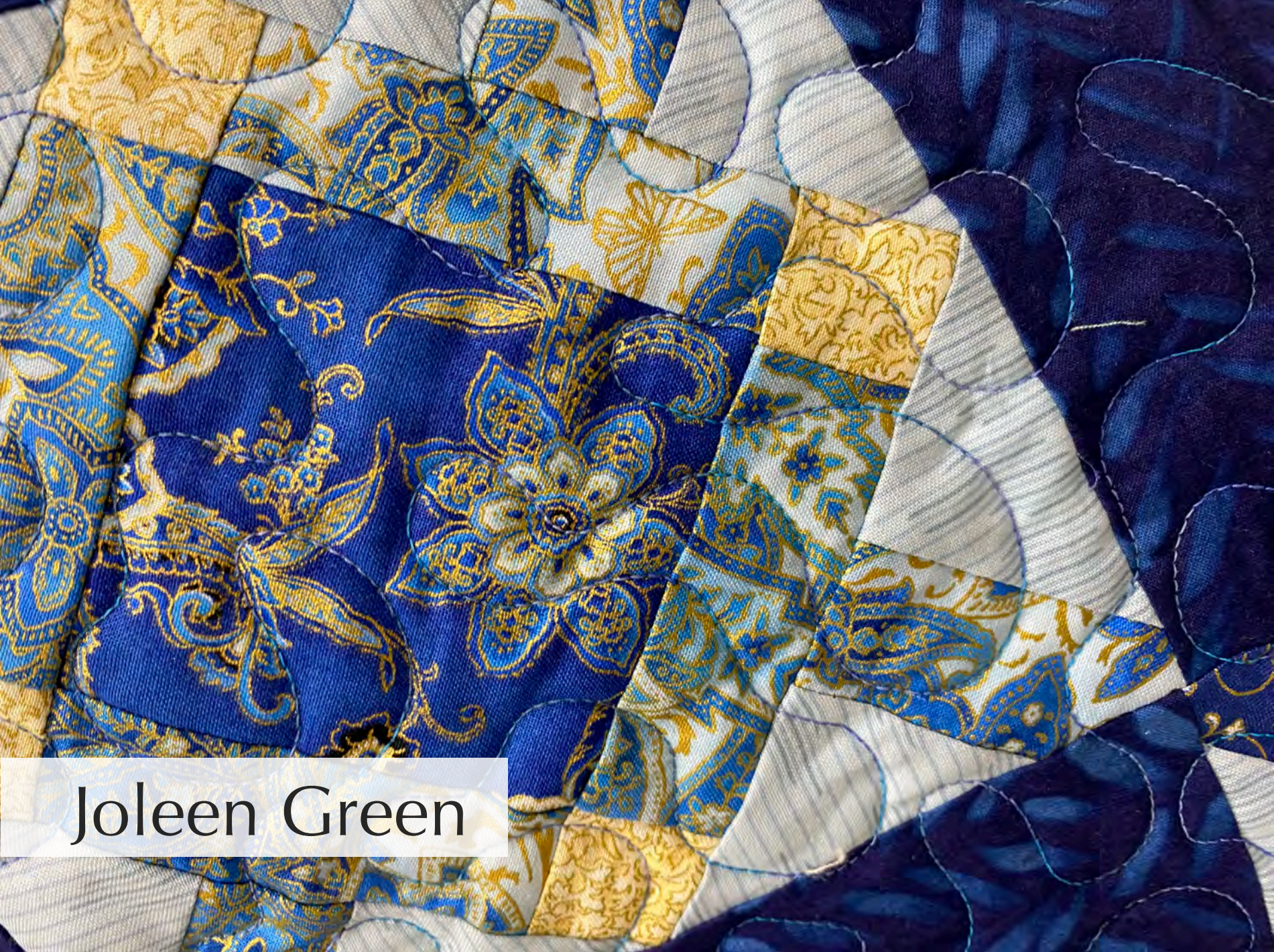
Joleen Green

Joleen Green

Diamond Tile—With this table runner I wanted to try one of Bonnie Hunters blocks from *Quiltworks*. The runner layout is my own design. 10" x 32"

Joleen Green





Joleen Green

Kathy Hodson

Iowa Farm Quilt—This is from a quilt pattern purchased at The Little Red Hen quilt shop in Muscatine. I pieced the quilt and Sarah Yoder Parker did the quilting. This quilt is going to the couple who have purchased the dairy farm my husband and his siblings grew up on. The black and white squares are reminiscent of the black and white Holstein cows they milk.

A large, colorful quilt is displayed, held up by two people. The quilt features a central panel with a red barn, a blue sky, and a yellow sun. Below the barn are four stylized animals: a pink pig, a white chicken, a yellow pig, and a white rabbit. The central panel is surrounded by a wide, multi-layered border. The innermost border is a black and white checkerboard pattern. The next border is a wide, light-colored band with various floral and geometric patterns. The outermost border is a wide, dark brown band with a repeating geometric pattern. The quilt is held up by two people, one on the left and one on the right, with their hands visible at the top corners. The background is a plain, light-colored wall.

Kathy Hodson



Kathy Hodson

Kathy Hodson

True Blue—A queen-size quilt from a pattern book by Heather Peterson. The kit was purchased from Willow Creek quilt shop in Kalona. Again, I pieced the quilt and Sarah Yoder Parker did the quilting. I like this pattern as it allows for custom quilting in the large blank spaces of the blocks.



Kathy Hodson

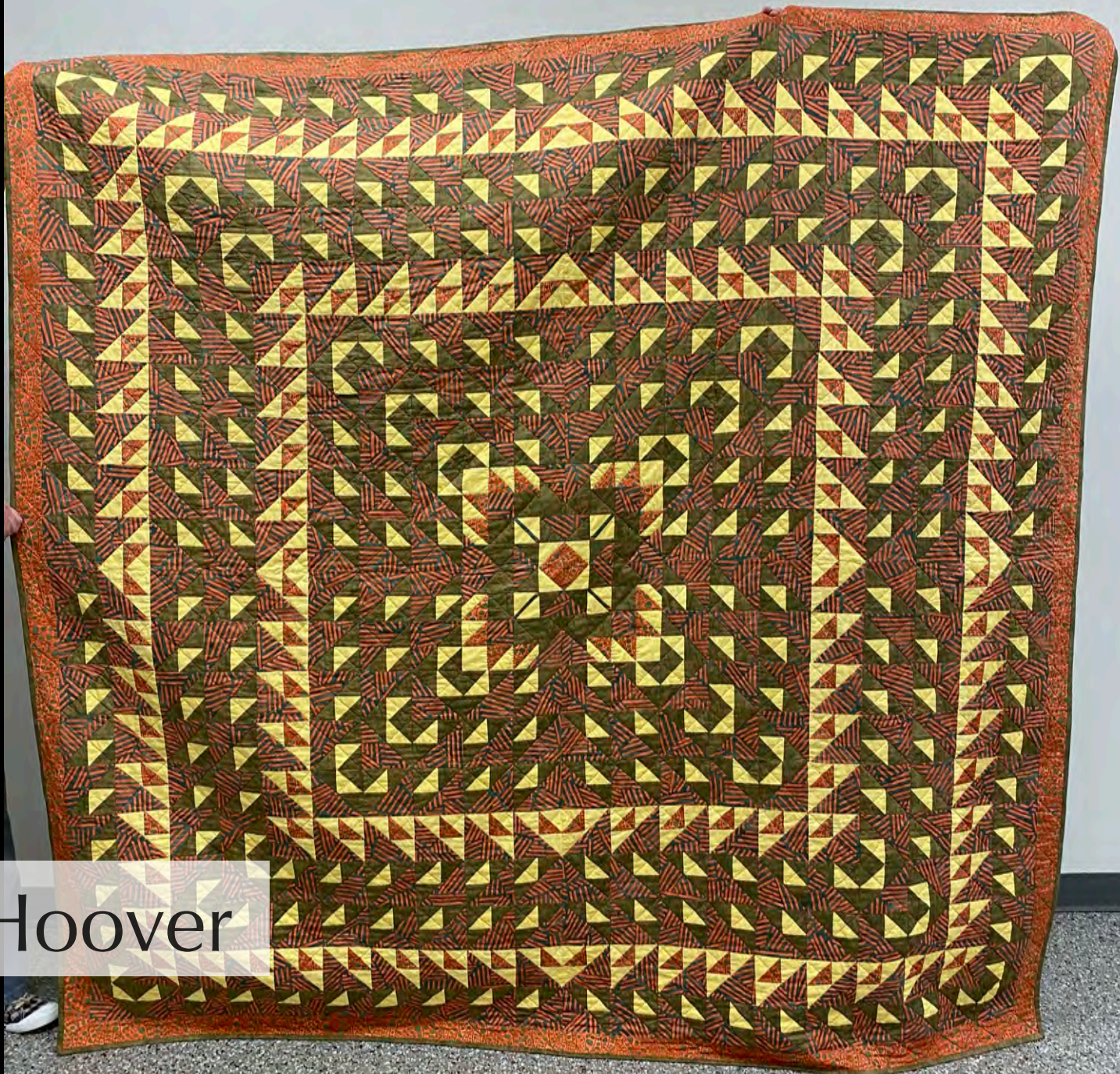


Kathy Hodson

Laura Hoover

The pattern is *Goose on the Pond* with Maple Leaf blocks in the center. It is pieced and hand quilted by myself. With 400 blocks and over 2,000 points I call this quilt *Perfection is not the answer* since there is no way I could make all those points match perfectly. 82" x 82"

I find hand quilting to be soothing, I love the rhythm and pace of it. I also love the finished look, I just wish I was better at it. And I don't mind machine pieces, just not where I am right now.



Laura Hoover



Laura Hoover

Laura Hoover

At the Circus—The pattern is Squared Up by Fran Gulick, the fabric is Tula Pink. It is pieced and hand quilted by myself. With all the bright colors and the geometric blocks, I wanted lots of loopy, waves quilting lines, to keep it moving, like a circus. 70" x 80"

Laura Hoover





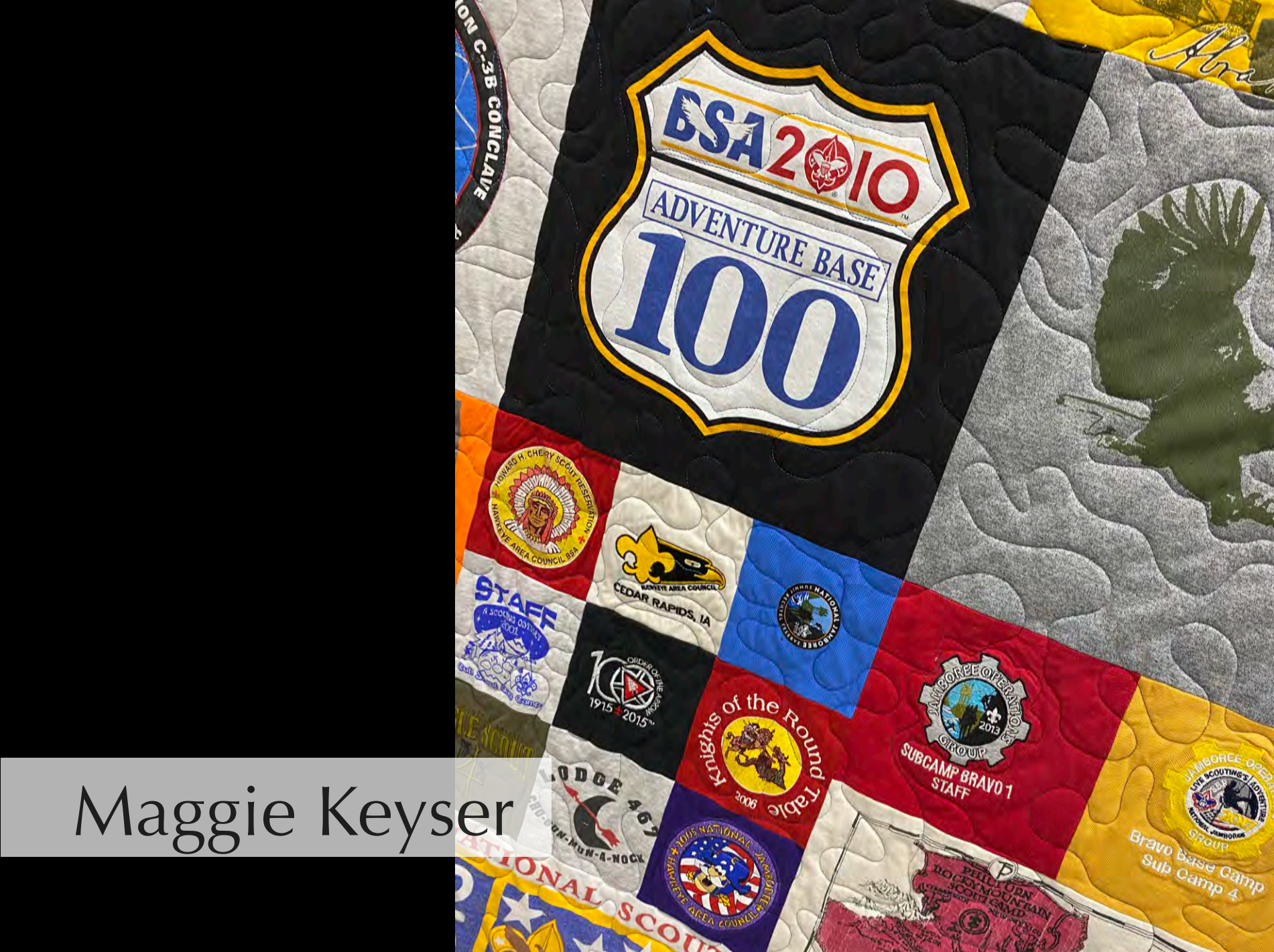
Laura Hoover

Maggie Keyser

I made this t-shirt quilt for my husband's good friend. Both men have been volunteers with Scouts for many years. Many of his t-shirts were logo shirts so small squares made up larger blocks. I added a sleeve so it could be displayed on a wall. The quilting was done by Joleen Green.



Maggie Keyser



Maggie Keyser

Carole Knutson

Harlequin—Is a pattern by Ardvark Quilts. Linda Duncan did the quilting. At first the pattern looks tricky because of all the angles, however it is sewn together by rows and not as difficult as I once thought. It is a high school graduation gift to our tenth and last grandchild. Tove, liked the original pattern she saw because it had a lot of gold in it. She commented that it reminded her of Gustav Klimt's work. Knowing that I put the panel for "The Kiss" on the back. Several pieces of the fabric are labeled Gustav Klimt's design by Robert Kaufman.

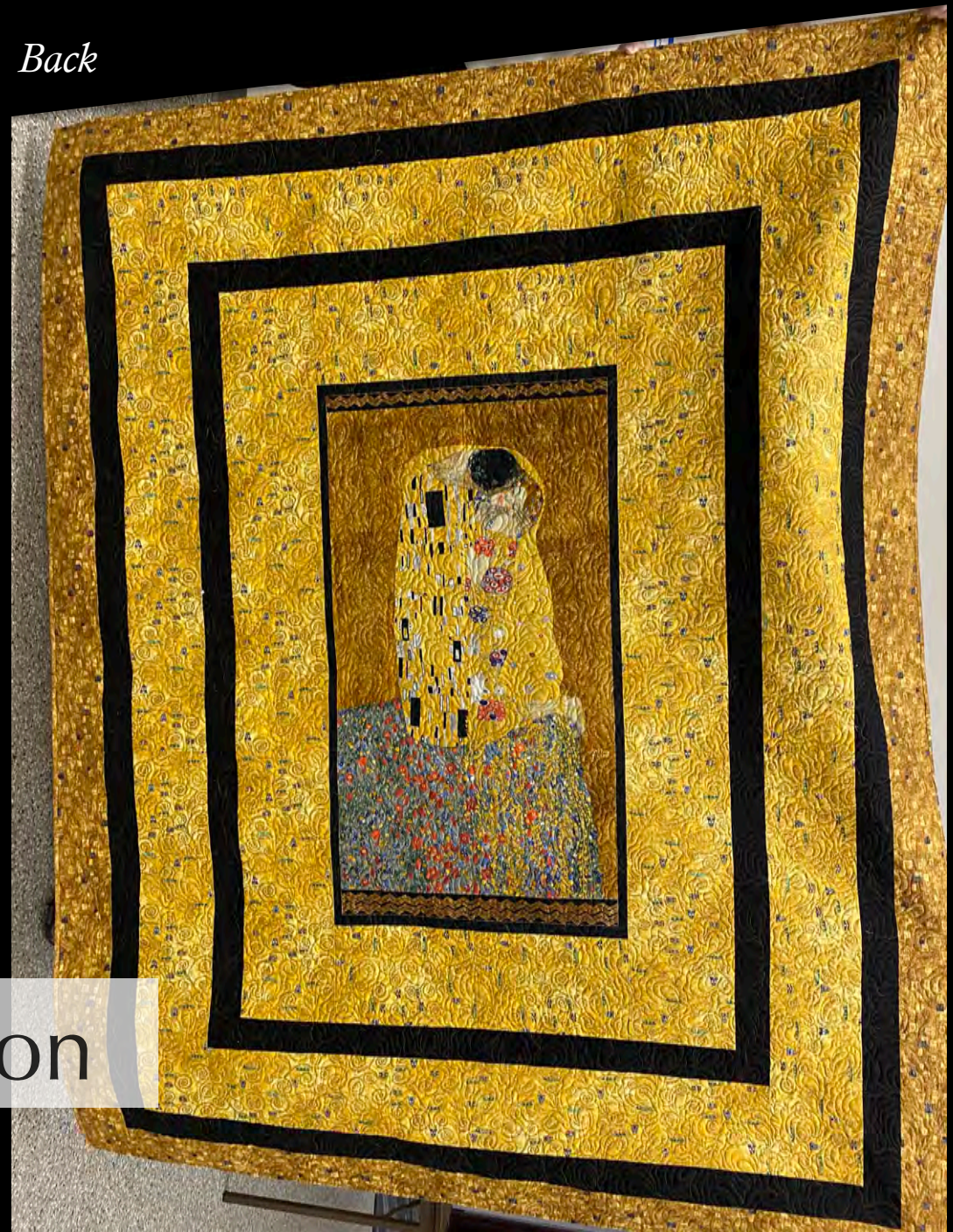


Carole Knutson



Carole Knutson

Back



Carole Knutson

Celia McHenry

Christmas in Europe—This was a 14 month Block of the Month designed by Gudrun Erla of GE Quilt Designs. It was pieced by myself and quilted by the Fabric Stasher in Tipton. I bought the fabric kit from GE Quilt Designs. Each month the pattern for the block was accompanied by a video with cutting and piecing directions. 73" x 75"

The blocks depict Christmas traditions in Europe such as the Yule log, English crackers, Danish woven hearts, German gingerbread hearts, the shoe in the window from Iceland (like our Christmas stockings), the German candle pyramids, the five Italian gift givers, the king wreath or king cake from SW Europe, decorated boats in Greece, the Scandinavian goat and Tomte, the candle in the window to welcome Mary and Joseph, the Christmas star, and the Christmas tree. The pieced row across the bottom represents paper snowflakes which have their deepest roots in Ukraine.



Celia McHenry



Celia McHenry

Sue Moffitt

This quilt was made for a great grandson. I fussy cut squares for a disappearing 9-patch to make an I Spy quilt. I machine-quilted it. 56" x 68"

Sue Moffitt





Sue Moffitt



Victoria Samala



Victoria Samala



Victoria Samala



Victoria Samala

Janann Schiele

This T-shirt quilt was made for my granddaughter Hannah Schiele to celebrate her graduation from West Branch High School. Each T-shirt has a special story that will bring back memories of family and school activities. Hannah will be taking her quilt to Iowa State University to snuggle in as she studies to be a veterinarian. It is backed by Minkey fabric. It was pieced by Janann Schiele with some help from Hannah. It was quilted by Keri Smith at The Fabric Stasher in Tipton, IA.



Janann Schiele



Janann Schiele

Government 2019-2020

Class President	Sophomores	Freshmen
Sarah Schier	Andrew Arling	Alex Pysan
	Benji Doney	Henrik Stehler
	David Linnard	Alex Westerman
	Maegan Hankoff	
	Leo Klitzhammer	
	Darwin Linnack	
	Byron Hays	
	Sarah Ward	
	Abby Deane	

Glenda Skallerud

Drayton Hall—This Villa Rosa pattern was made from a kit of fat quarters in pastel solids and Kaffe prints. It was quilted by Kristin Hoftyzer in a pattern called *Fluid Meander*. 77" x 63"



Glenda Skallerud



Glenda Skallerud

Glenda Skallerud

Sweet Treats—This quilt uses a pattern from a 2017 issue of Block magazine. It is made from a layer cake using the cake mix papers for piecing the triangles. The fabric line is Bloomsbury by Franny and Jane. The quilting was done by Kristin Hoftyzer in one of her original patterns called “Echoed Paisley. 95" x 78"



Glenda Skallerud



Glenda Skallerud

Juli Seydell Johnson

Reach for the Sun—Queen size quilt. Machine pieced and machine appliquéd with a pattern derived from Norwegian Rosemaling (painting). Original pattern by Juli Seydell Johnson. It will be on display at Vesterheim Norwegian-American Museum in Decorah, Iowa as part of their 2023 “Embellishments” Art Exhibit - July 2023 - January 2024.



Juli Seydell Johnson



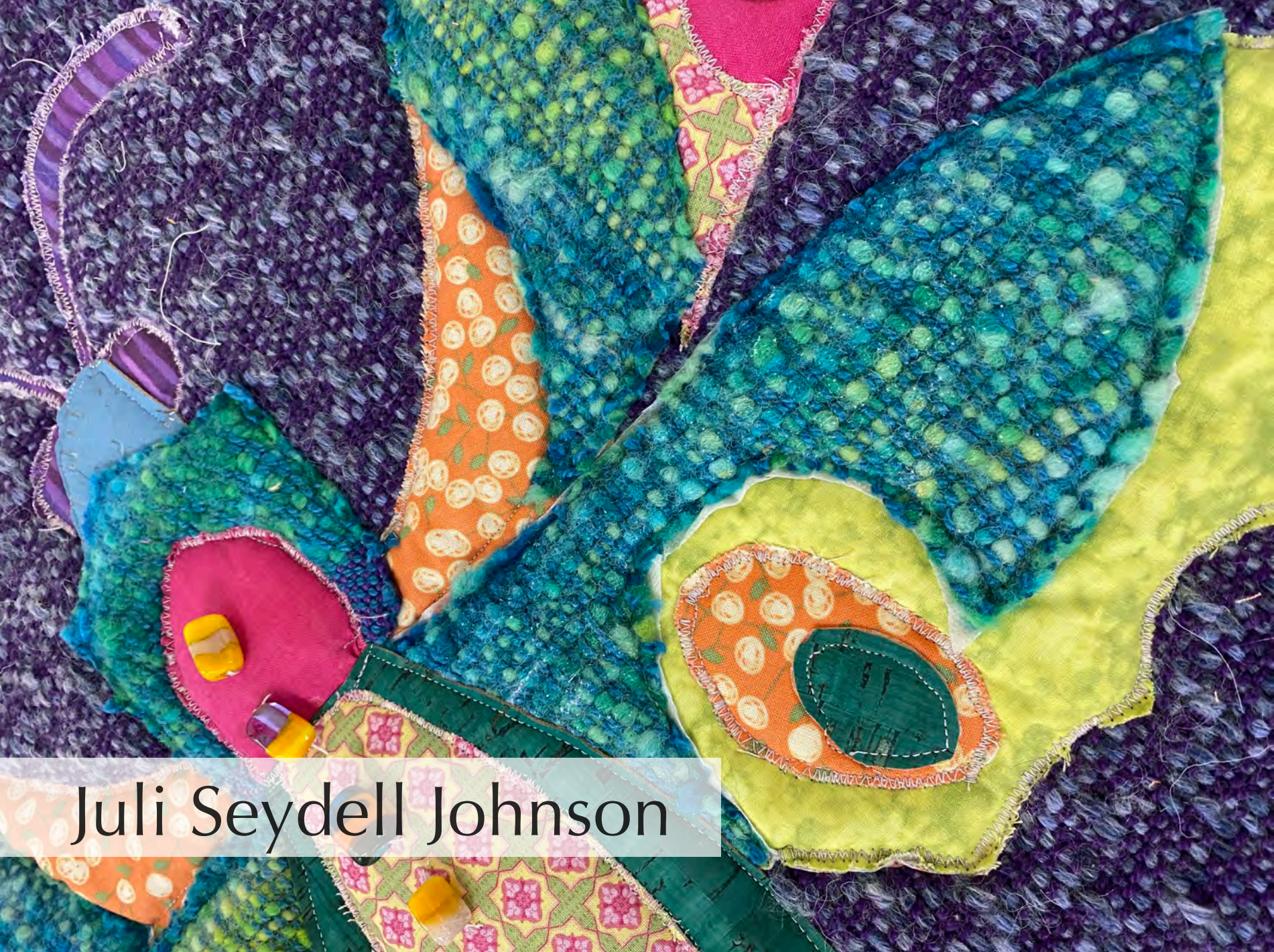
Juli Seydell Johnson

Juli Seydell Johnson

Moths and Moons—Quilt items created from the September 2022 Jane Sassaman workshop.



Juli Seydell Johnson



Juli Seydell Johnson

Guild Membership

This was created from a 2013 challenge, there were two challenge options that year. For the Fabric Block Challenge participants were given a fabric pack and told to create a 9.5" block of their choosing. Three blocks were awarded prizes. The fabrics were donated by a single member. The construction, border appliqué, binding were completed by additional members with the beautiful quilting done by Sarah Yoder Parker. After many years in hiding it will be donated to Our Redeemer Lutheran Church for possible fundraising.



Membership



Membership